
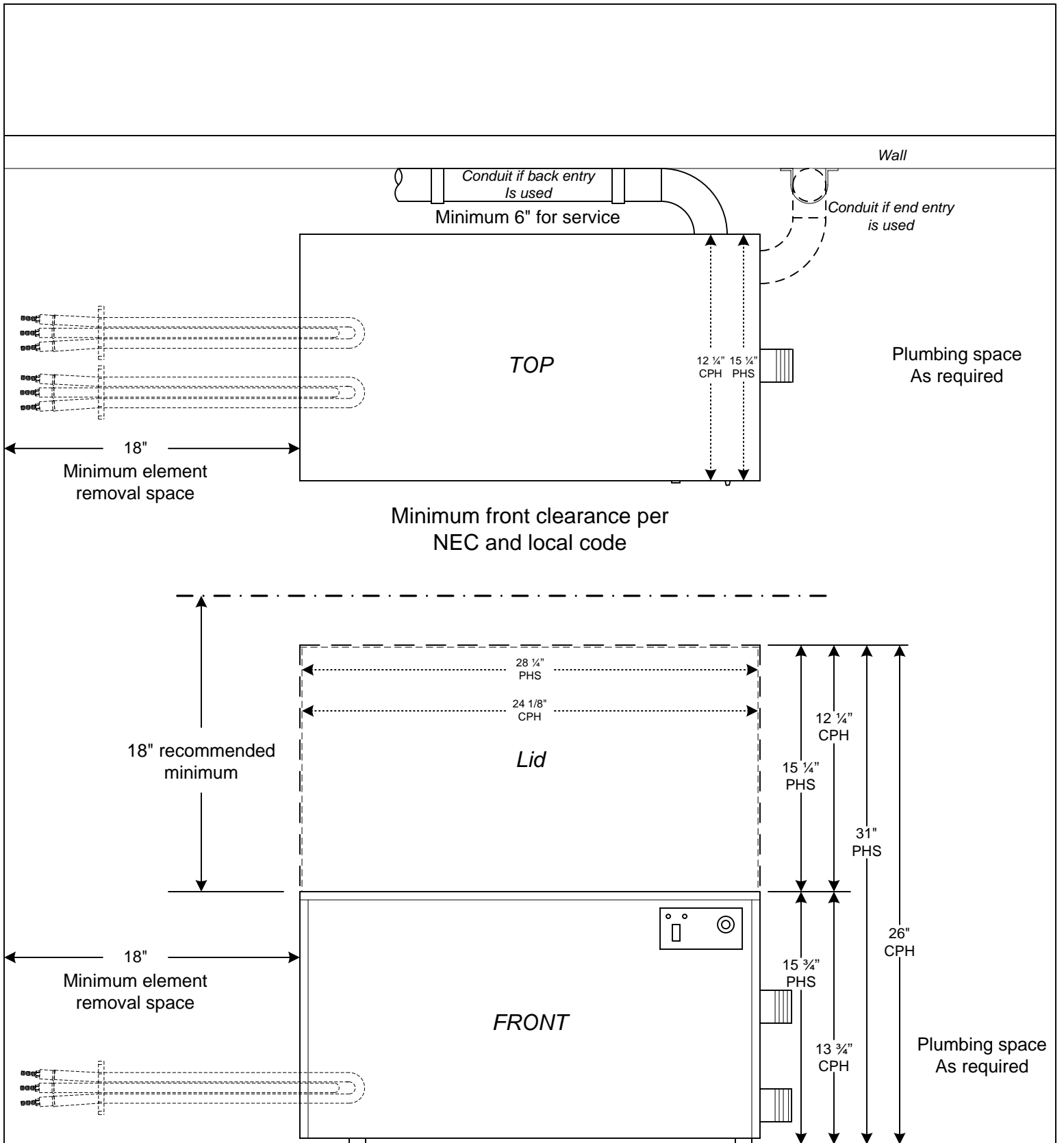


|      |             |      |    |  |              |   |  |
|------|-------------|------|----|--|--------------|---|--|
|      |             |      |    | <br><b>HEATER COMPANY, INC.</b><br>P.O. Box 1750<br>Kent WA 98035-1750 |              | <b>Clearances</b><br>Models:<br>CE<br>12, 15 & 18 kW, |  |
| Rev. | Description | Date | By | R.E.W.   | 11 Oct. 2005 |   |  |



HEATER COMPANY, INC.  
 P.O. Box 1750  
 Kent WA 98035-1750

### Clearances

Models: CPH & PHS  
 24 & 30 kW,  
 36, 45, 54 & 57 kW

(60, 66 & 72 kW export only)

|      |             |               |     |
|------|-------------|---------------|-----|
| A    | Added CPH   | 10/10<br>2005 | REW |
| Rev. | Description | Date          | By  |

R.E.W. 6 Oct. 2005